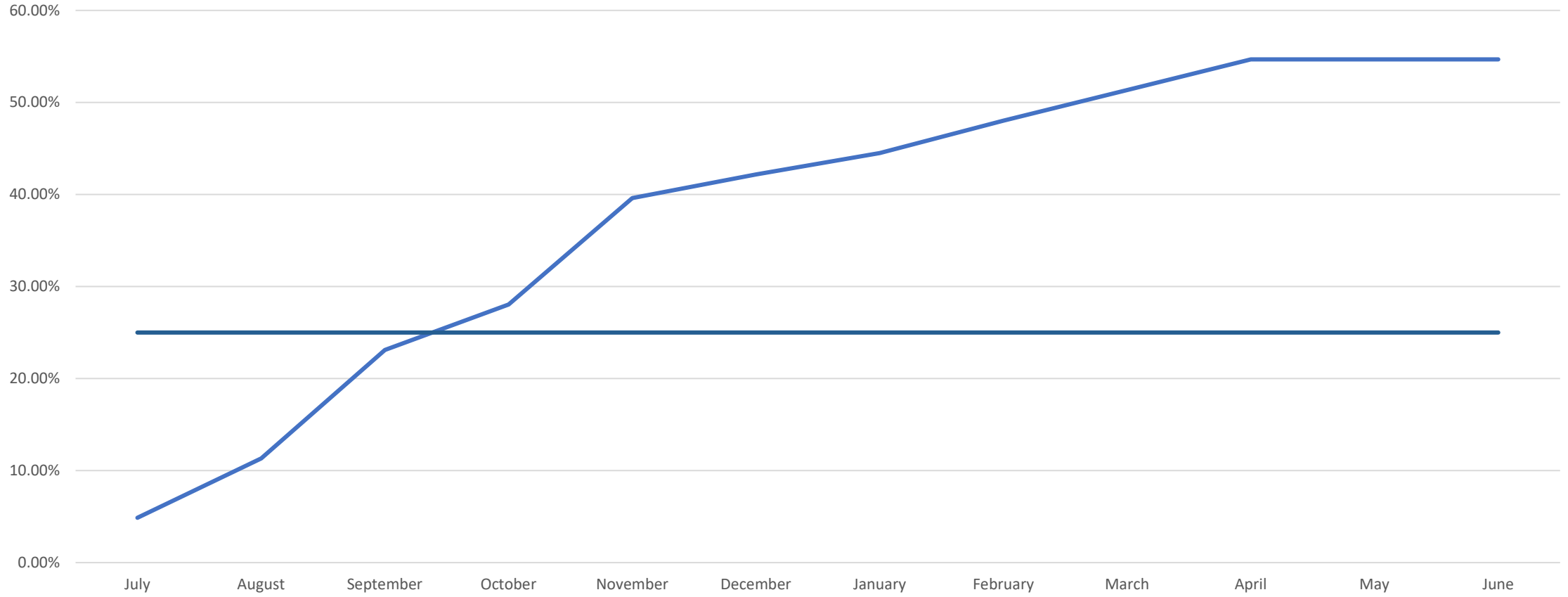


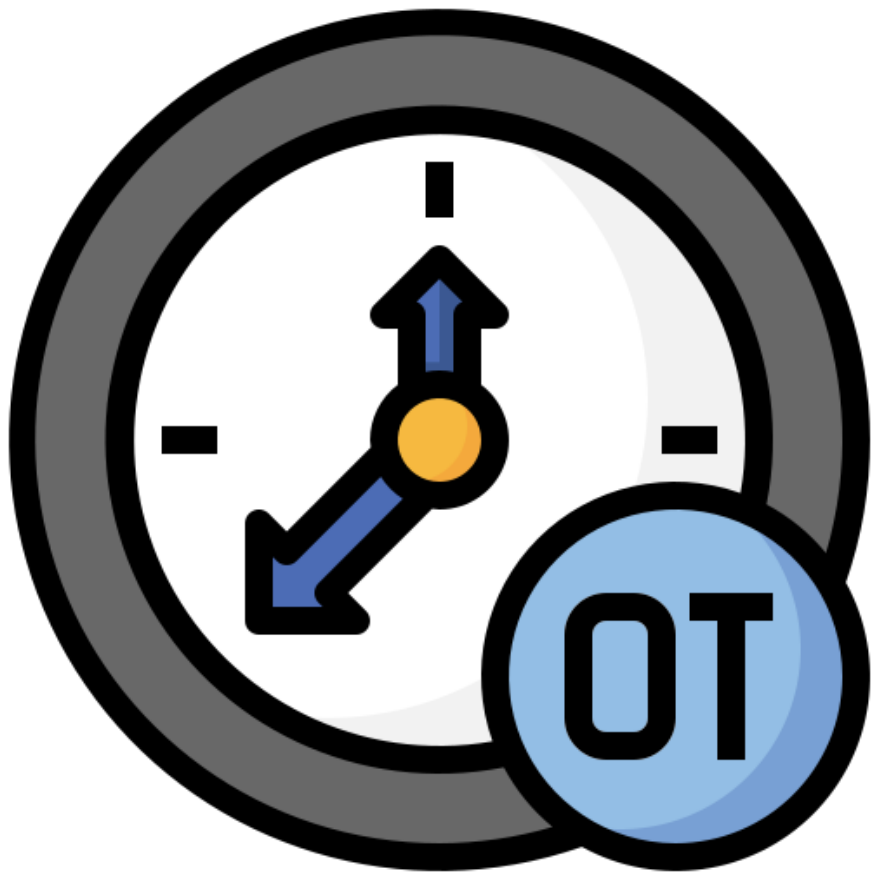


## **KEY PERFORMANCE INDICATORS**

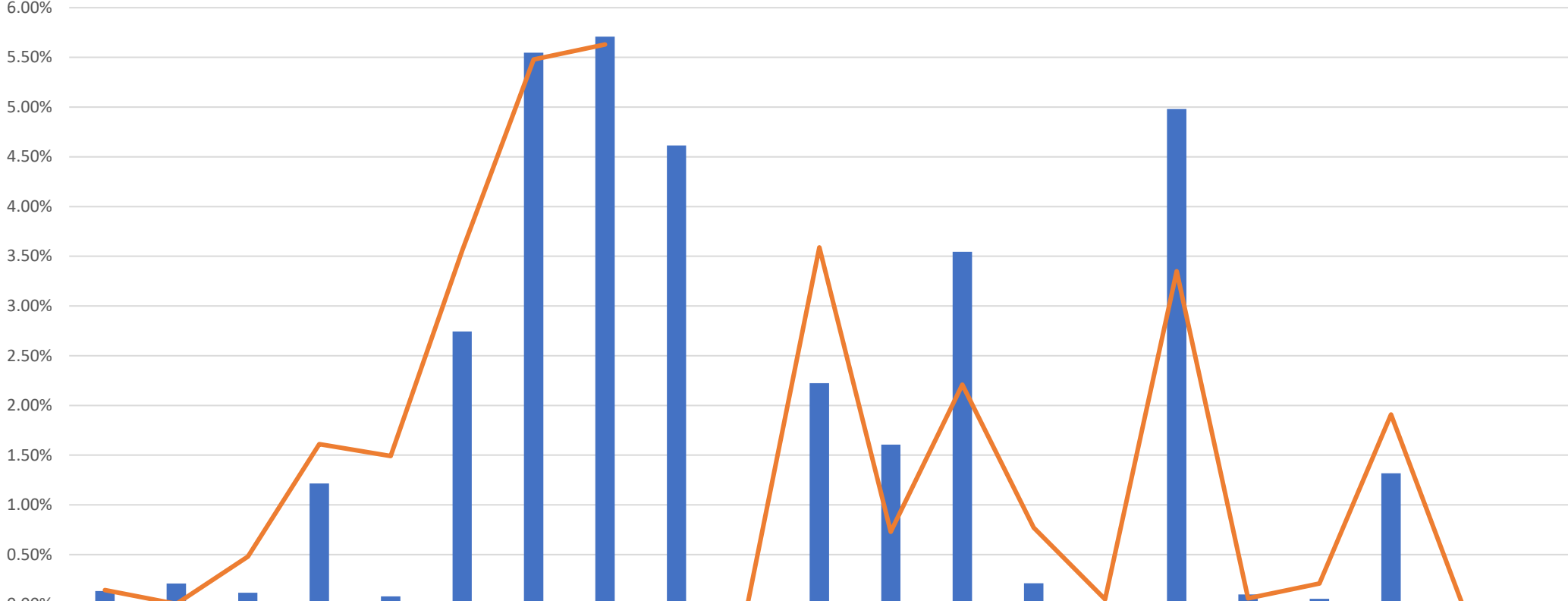


# Camelot Employee Turnover





### 2025-2026 Overtime % Compared to Goal



<span style="color: blue;">█</span> Overtime %	0.13%	0.21%	0.12%	1.22%	0.08%	2.74%	5.55%	5.71%	4.62%	0.00%	2.22%	1.61%	3.55%	0.21%	0.02%	4.98%	0.10%	0.05%	1.32%	0.00%	0.00%
<span style="color: orange;">—</span> Goal	0.1425%	0.0029%	0.48%	1.61%	1.49%	3.56%	5.48%	5.63%		0.02%	3.59%	0.73%	2.21%	0.77%	0.05%	3.35%	0.06%	0.21%	1.91%	0%	0%

## HR EXIT INTERVIEWS

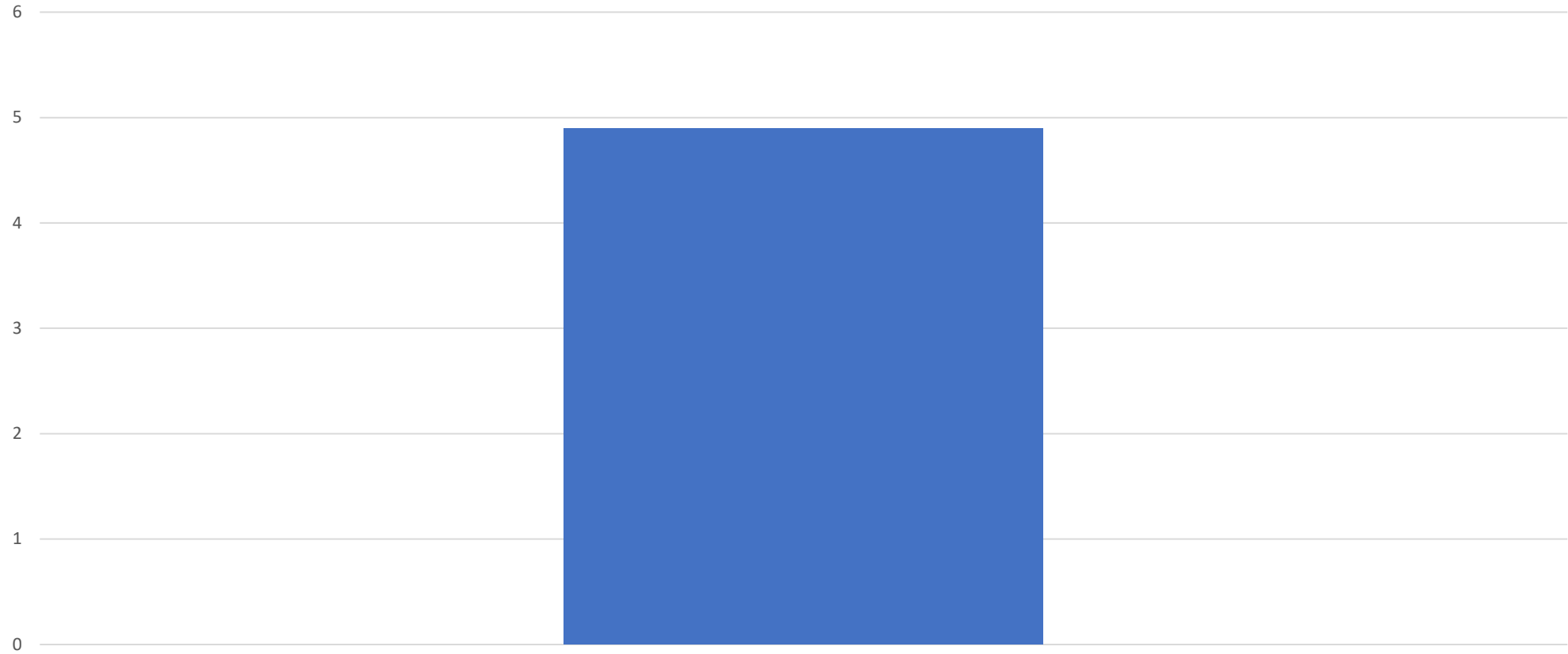


On a scale from 1-10, with 1 being the lowest and 10 being the highest, how would you rate your overall satisfaction of the job during your time with our company.

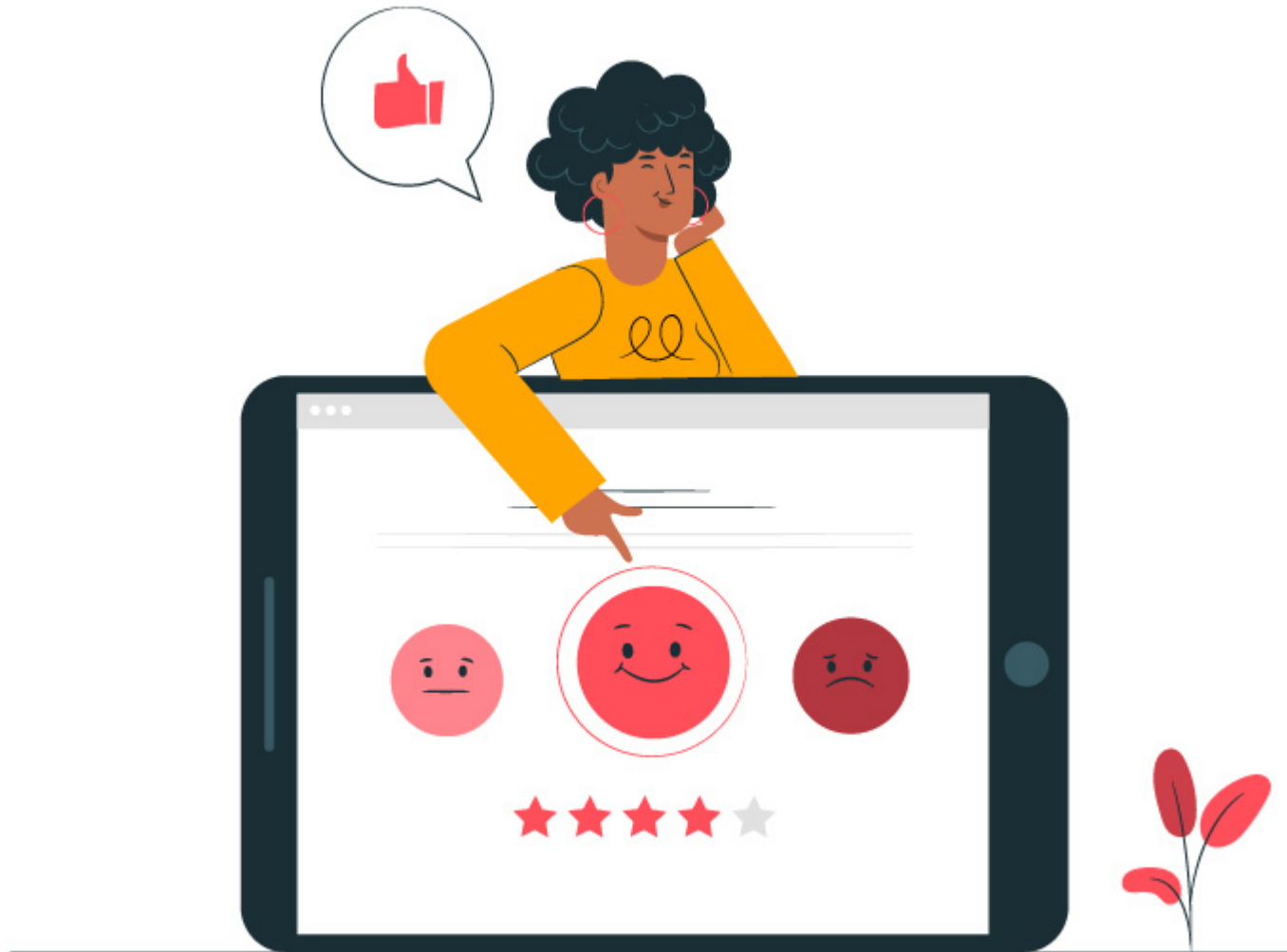
Goal of 6

### Exit Interview KPI

On a scale of 1 to 10, how would you rate your overall satisfaction of the job during your time with the company



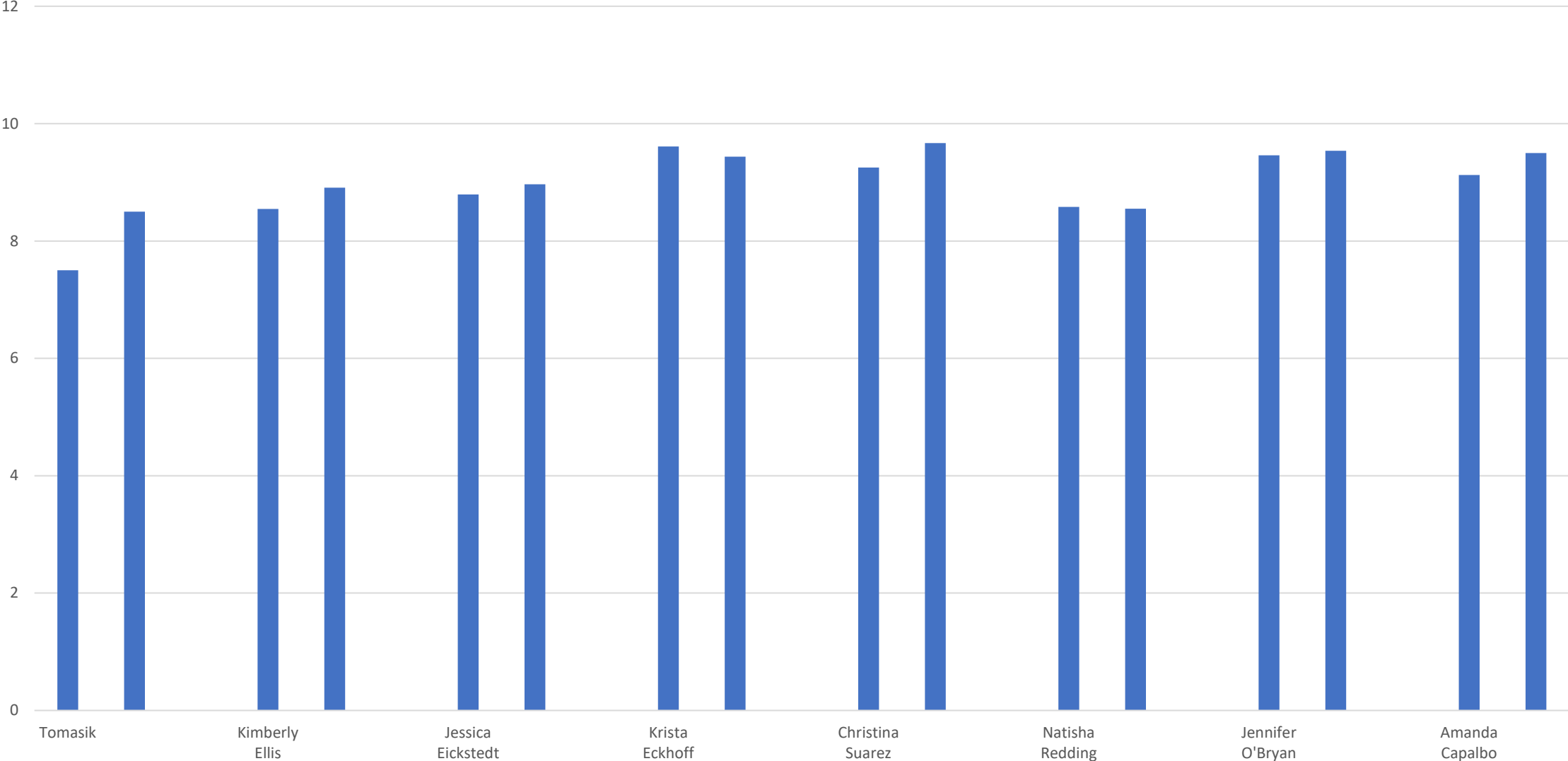
## CANDIDATE EXPERIENCE



On a scale of 1-10, with 10 being the highest score, how satisfied are you with the hiring process.

On a scale of 1-10, with 10 being the highest rating, how likely are you to recommend opening at Camelot Community Care to friends and colleagues.

### Candidate Experience/Promoter Rating

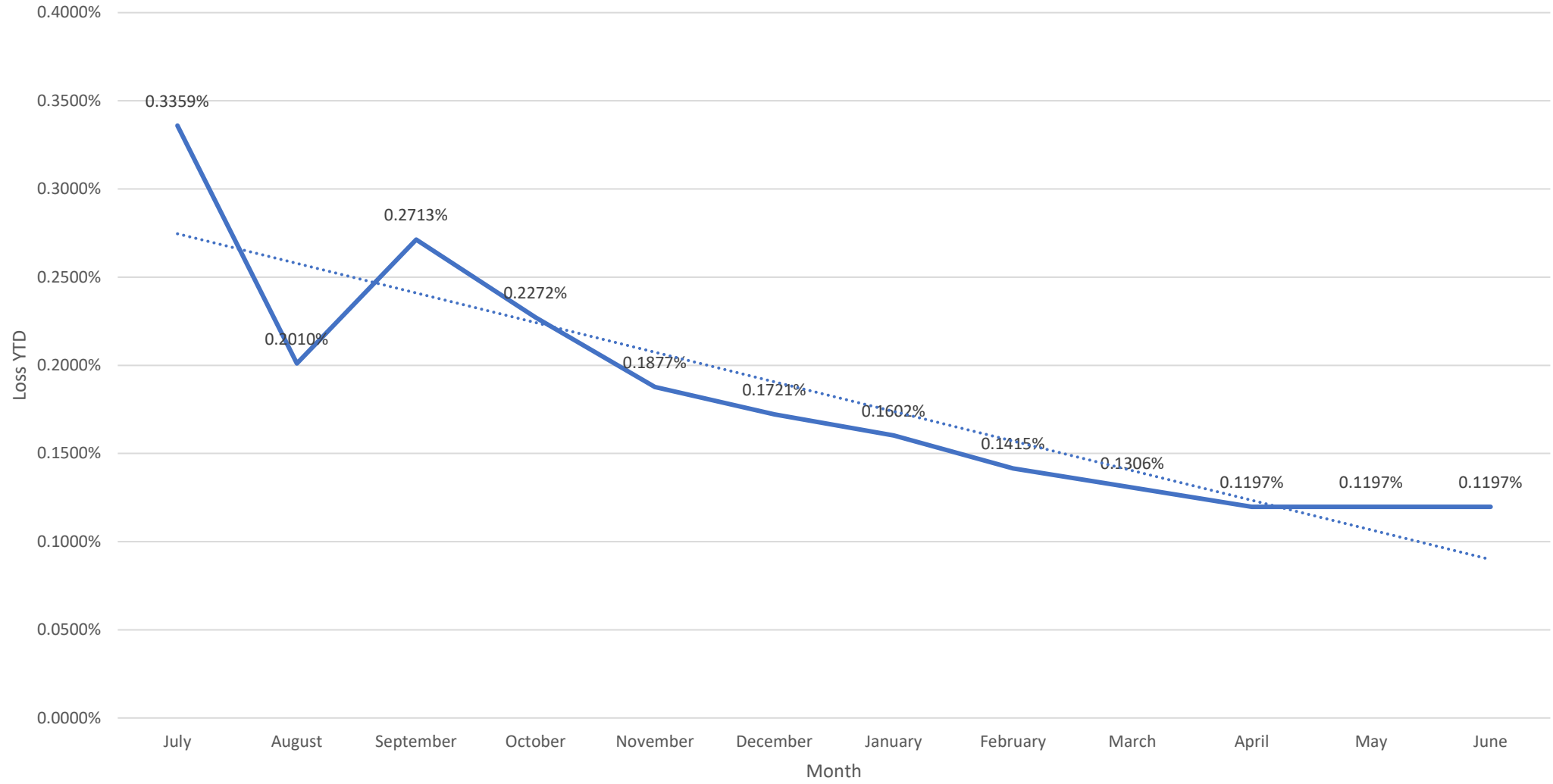




Billing Write Offs

Goal is < .5% annually

# Camelot Total



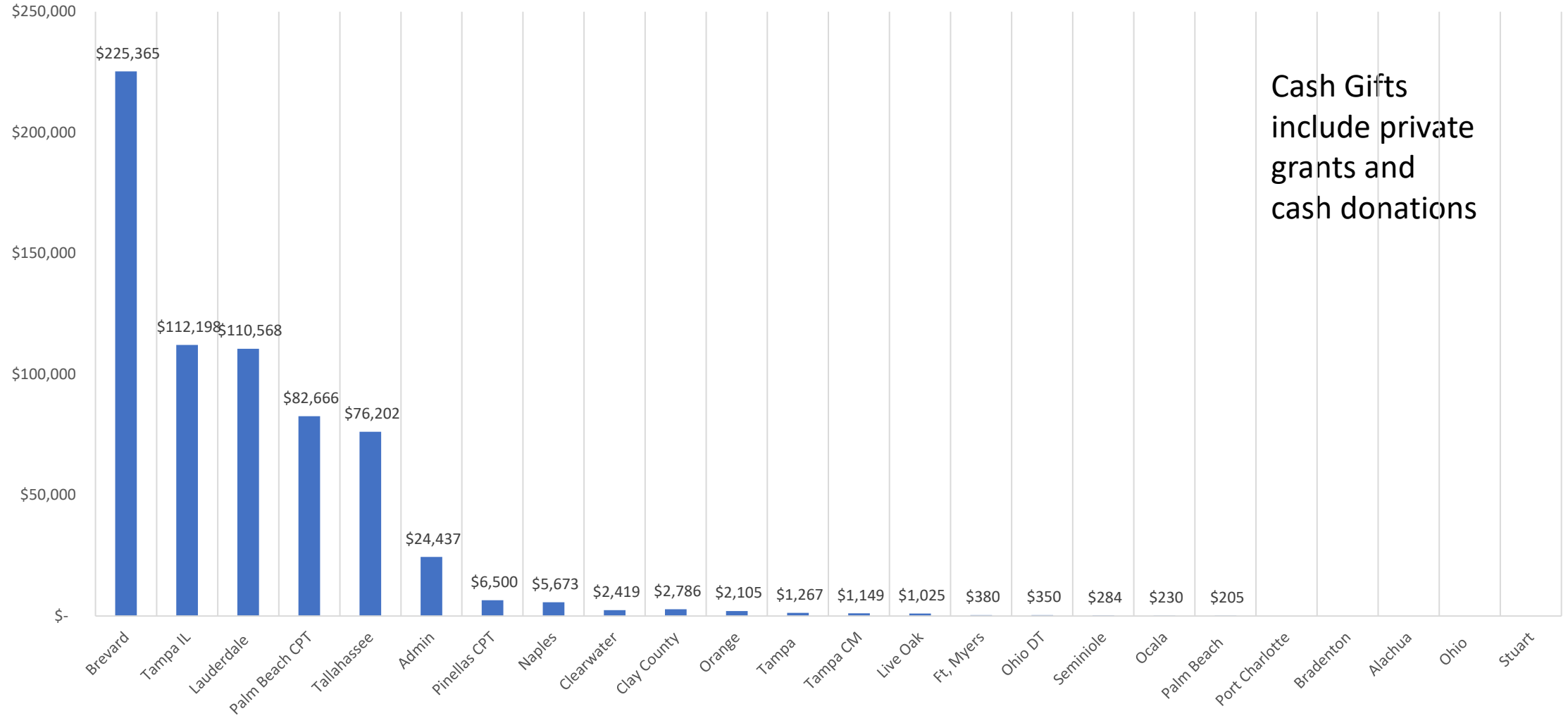


Number of new Treatment  
Foster Care Homes licensed.

Ocala:	1
Gainesville:	1
Tampa:	
Clearwater:	
Sarasota:	
Lauderdale:	
Palm Beach:	1
Tallahassee:	0



## Cash Gifts and Grants by Location

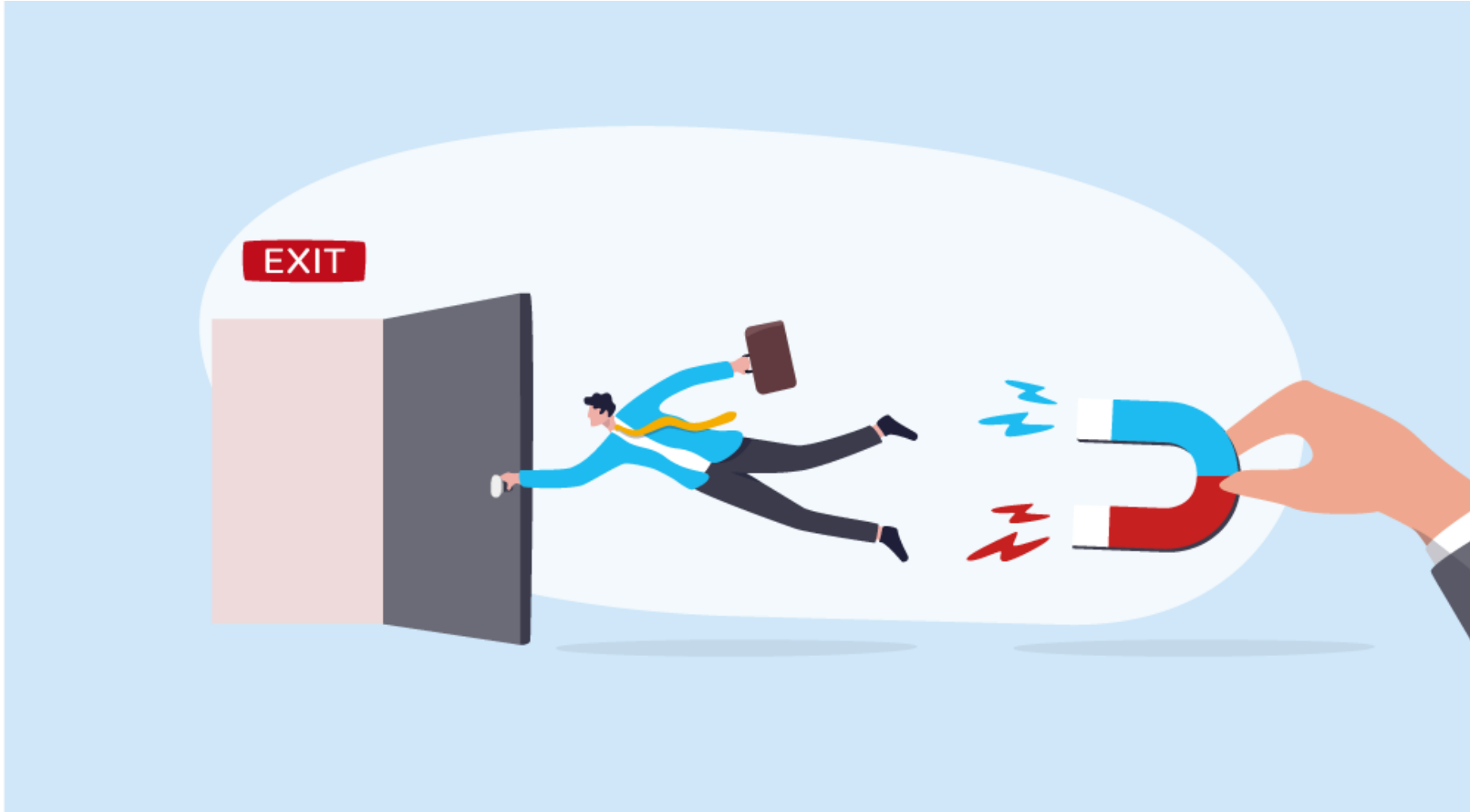


Timely Completion of Performance Evaluation

Goal: 95%

This KPI is still being developed

## EMPLOYEE RETENTION



## Employee Retention

